

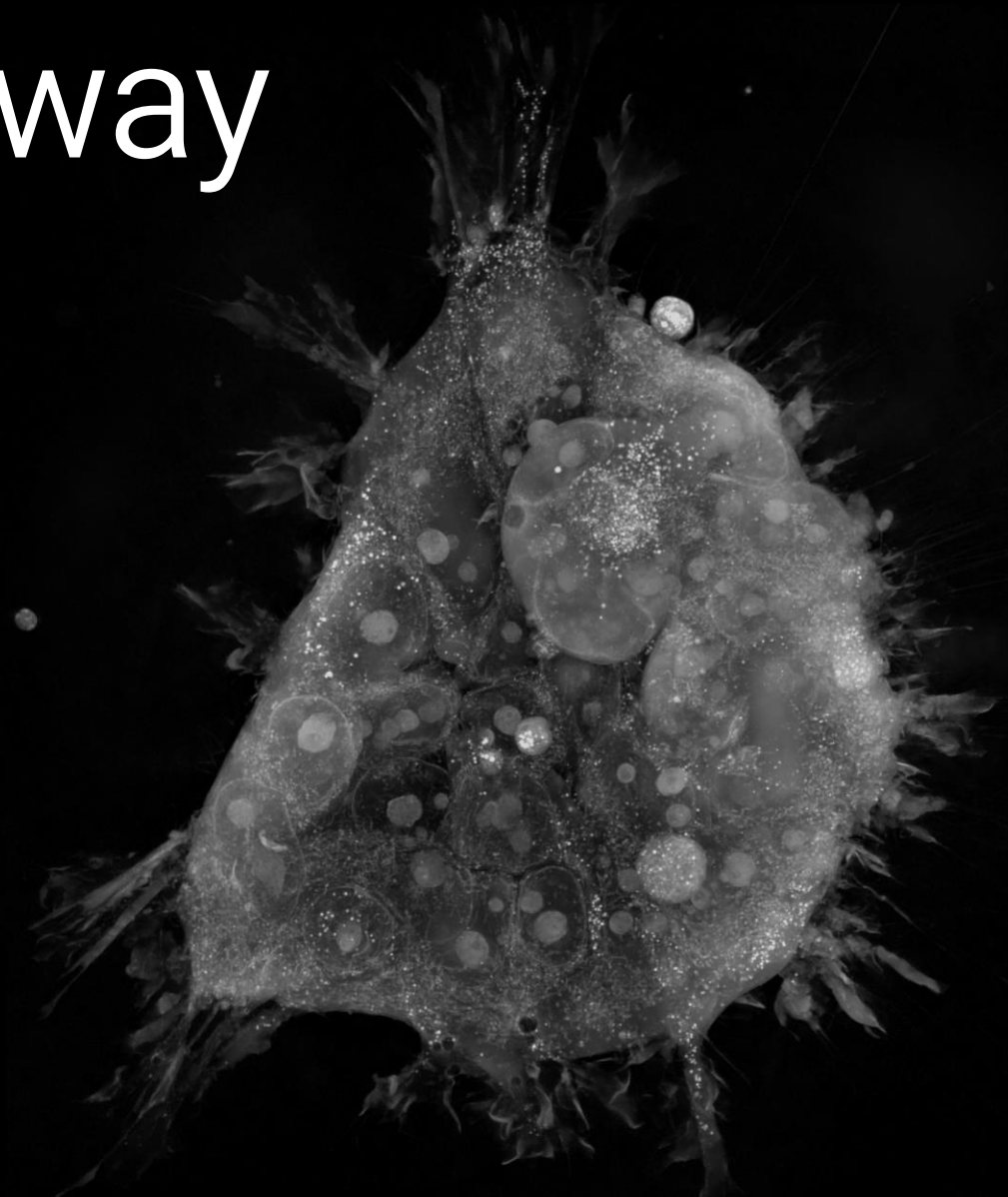
---

# Innovate the way we see life



Tomocube

---



---

# Disclaimer

---

This material has been prepared by Tomocube, Inc. (“the Company”) for informational purposes in investor presentations. The forward-looking statements contained herein have not been independently verified. These statements relate to future events and include the Company’s expectations regarding its future operational and financial performance. Terms such as “expected,” “prospects,” “plans,” “anticipated,” “(E),” and similar expressions indicate such forward-looking content.

These forward-looking statements are subject to uncertainties arising from changes in the business environment, and actual performance may differ materially from what is described herein. Such outlooks are based on the Company’s current circumstances and strategies as of the date of this presentation and may change without prior notice due to market conditions or internal decisions.

The Company and its employees assume no responsibility or liability, including negligence or otherwise, for any loss arising from the use of this material. This document does not constitute an offer to purchase, sell, or subscribe for any securities and should not form the basis of any investment decision or agreement.

Investors should base their investment decisions solely on the Company’s official public filings with the Financial Supervisory Service.

This material may be used for non-commercial purposes without alteration, provided that the source is properly cited. However, unauthorized distribution or reproduction of modified content without prior approval from the Company may be subject to legal consequences.

---

# Table of contents

Prologue

Chapter 1. Why Holotomography(HT)

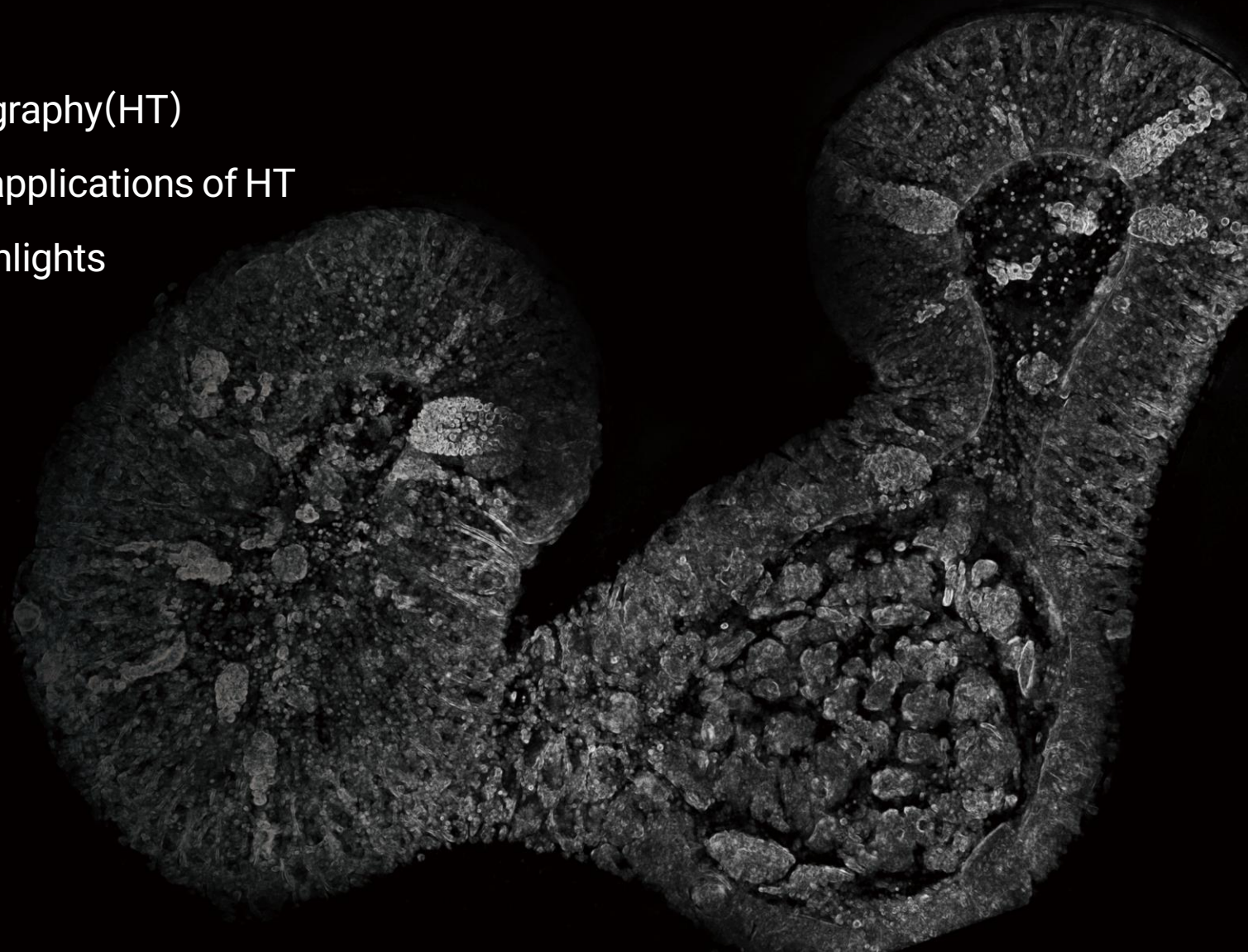
Chapter 2. Expanding the applications of HT

Chapter 3. Investment Highlights

Appendix



Tomocube



# Paradigm Shift in Cell Analysis

- Growth drivers: 3D Biology & Regenerative Medicine



**Core: 3D label-free measurement & AI-enabled analysis of living cells, tissues, and organoids**

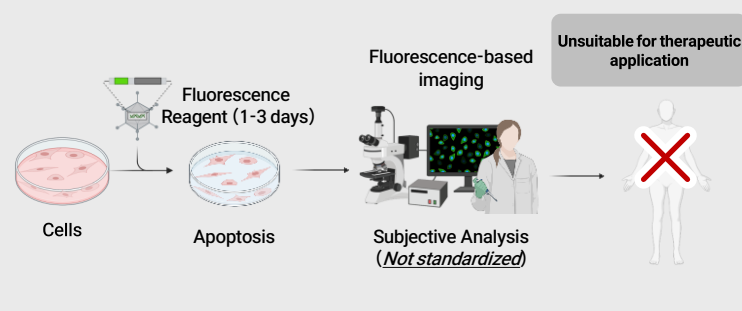


**Holotomography: Real-time, high-resolution, label-free 3D analysis of live cells**

# Unmet Needs Addressed by Holotomography

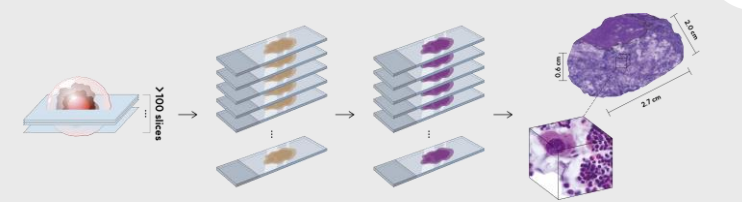
- Fulfilling Unmet Needs in the Advanced Biomedical Sector

### Conventional



Mitigates cell damage and deformation from fluorescent dyes

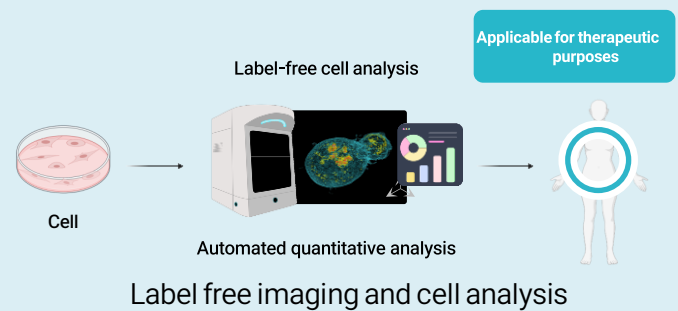
---



Typically, cells must be fixed, sectioned, and stained for structural observation

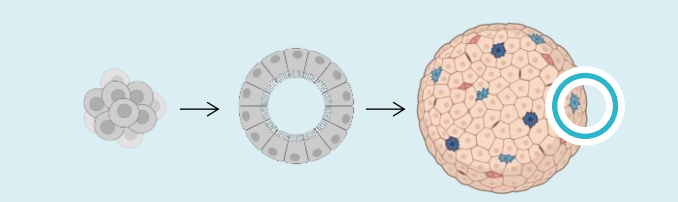
Impossible to conduct long term live cell analysis

### HT (“Holotomography”)



Label free imaging and cell analysis without any cell damage or loss

---



Long-term 3D observation of live cells possible

VS

## Transformative Effects

Exclusive solution for  
Cell biology &  
Regenerative medicine

Sample preprocessing Not Required

---

Label-free 3D imaging analysis First in Class

---

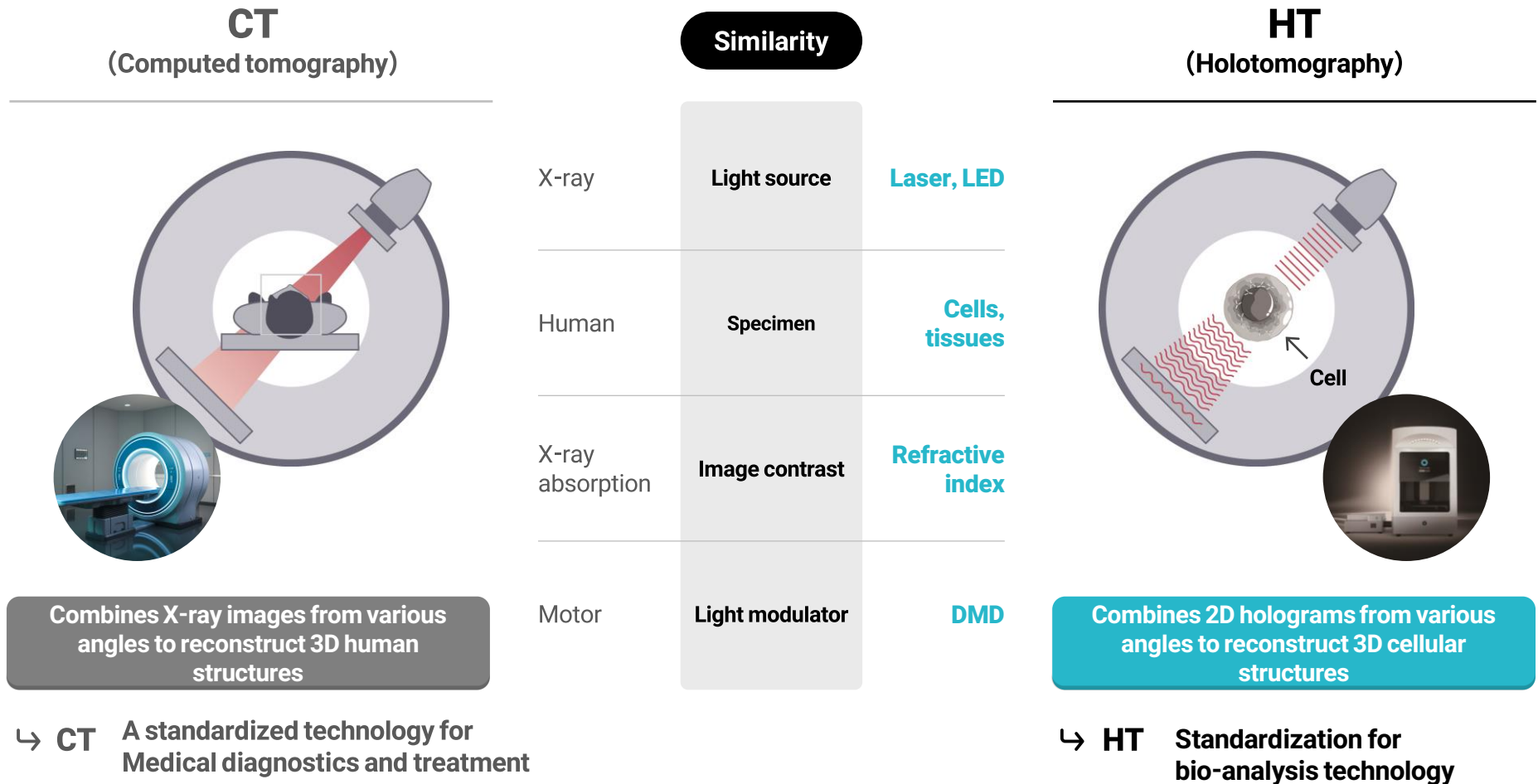
Unlimited, prolonged cell analysis First in Class

---

Measurable sample thickness ↑ 5x

# Setting new standards in cell analysis through Holotomography

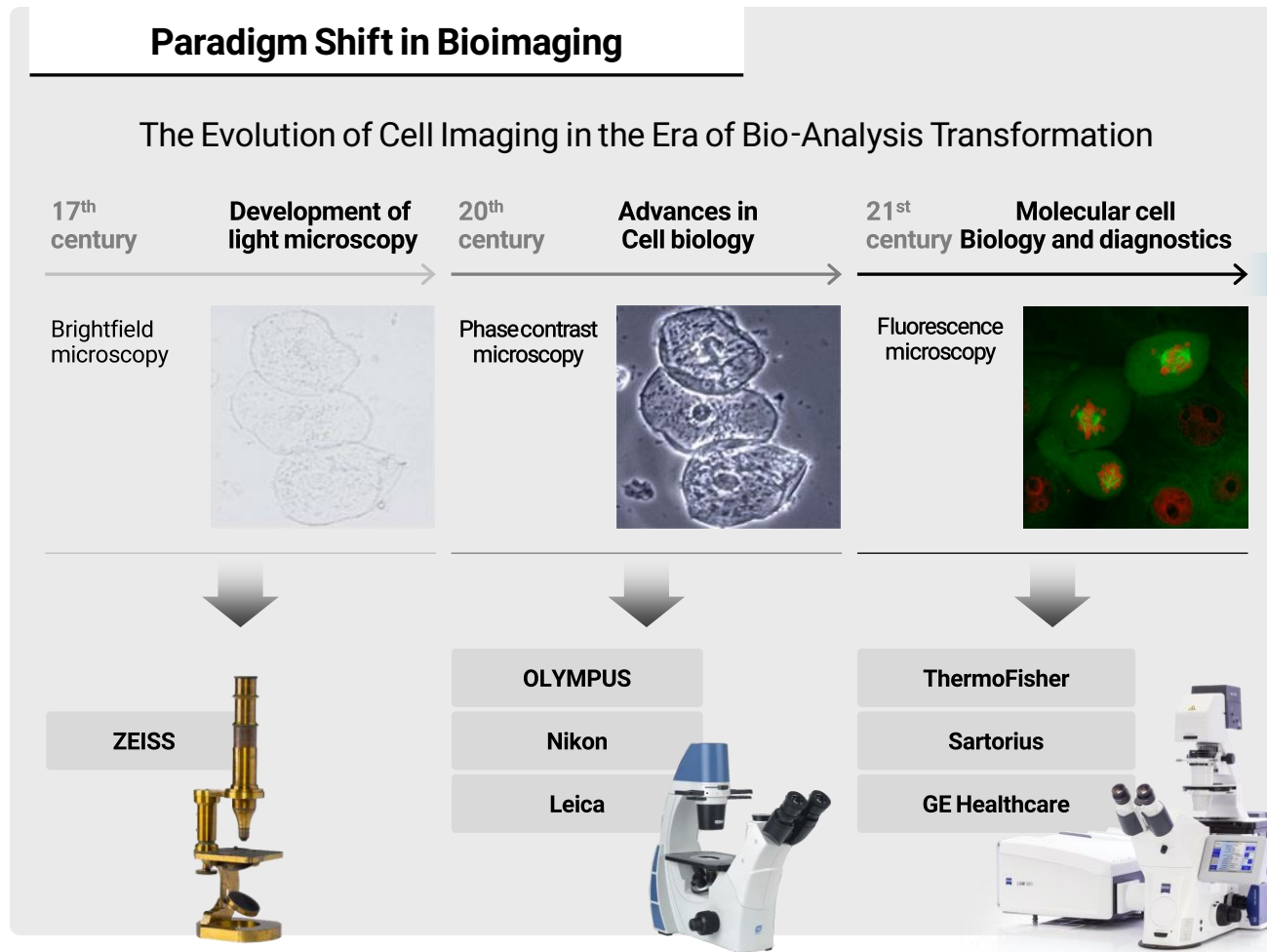
•• Just as CT Transformed Diagnosis, HT is Poised to Transform Bioanalysis



\* DMD (Digital Micromirror Device)

# Leading Advanced Bio/Medical Industry

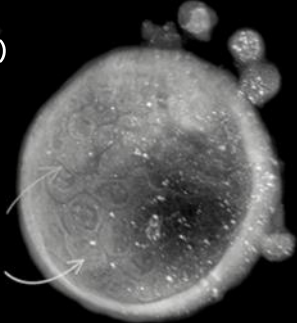
- Pioneering Holotomography: From Innovation to Global Commercialization





### 3D Biology & Regenerative Medicine

3D Cell Structure Measurement & Analysis

**Holotomography**  
(Korea, 2015 - Present)



“ Major Developer of ”  
**Holotomography Technology**

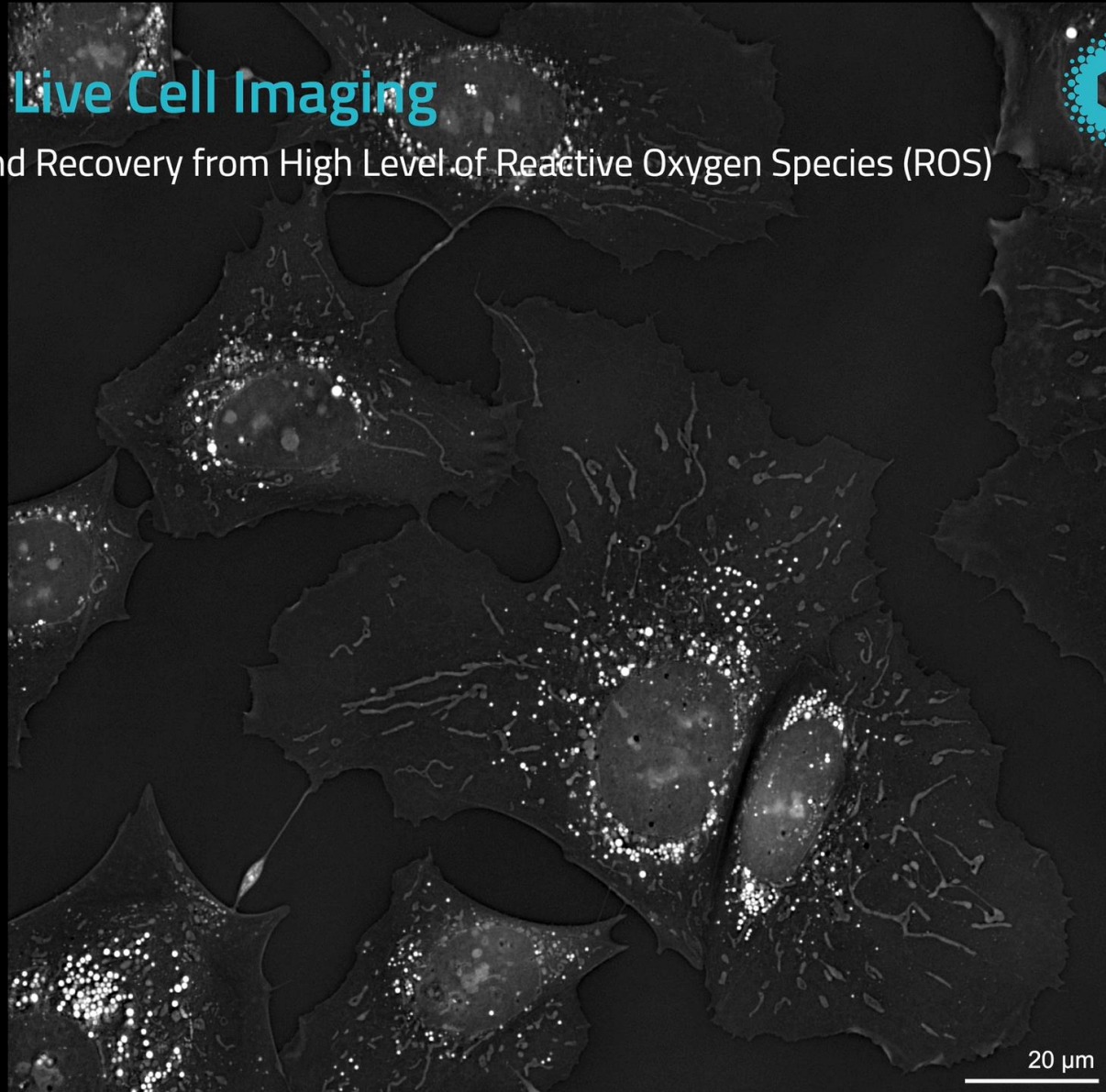


## Label-free 3D Live Cell Imaging

Cellular Responses and Recovery from High Level of Reactive Oxygen Species (ROS)



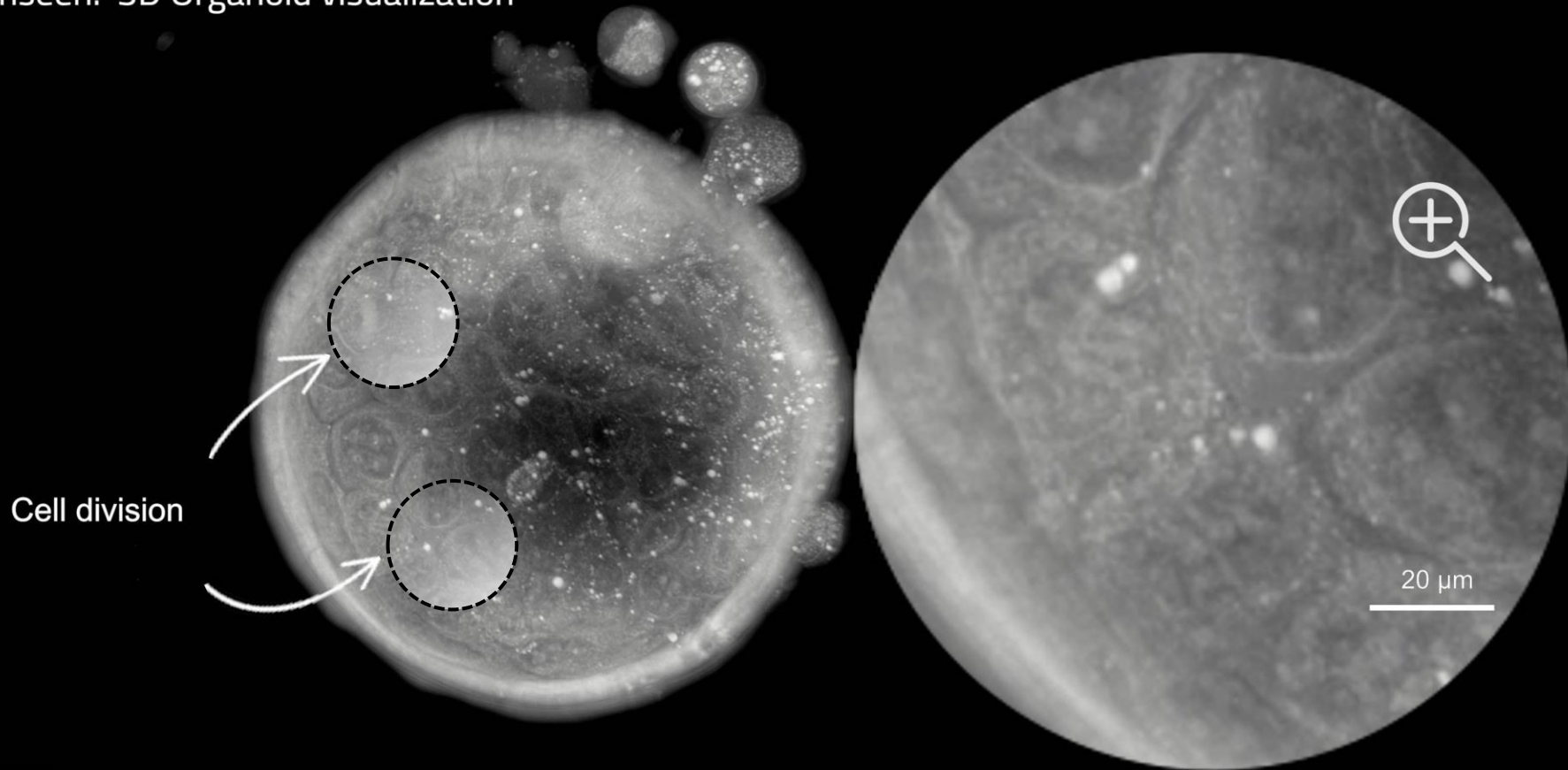
Tomocube



- Cell line: Hep3B
- Microscope: HT-X1
- Observation duration: 4.5 hr
- Time interval: 20 sec
- Chip: ibidi  $\mu$ -Slide 1 Luer
- Flow rate: 0.23  $\mu$ L/min

## Label-free 3D live cell imaging

Unveiling the unseen: 3D Organoid visualization



---

Chapter 1.

# Why Holotomography (HT)

---

01. Key Advantages of Holotomography

02. HT Platform (1) Hardware

(2) Software

(3) AI

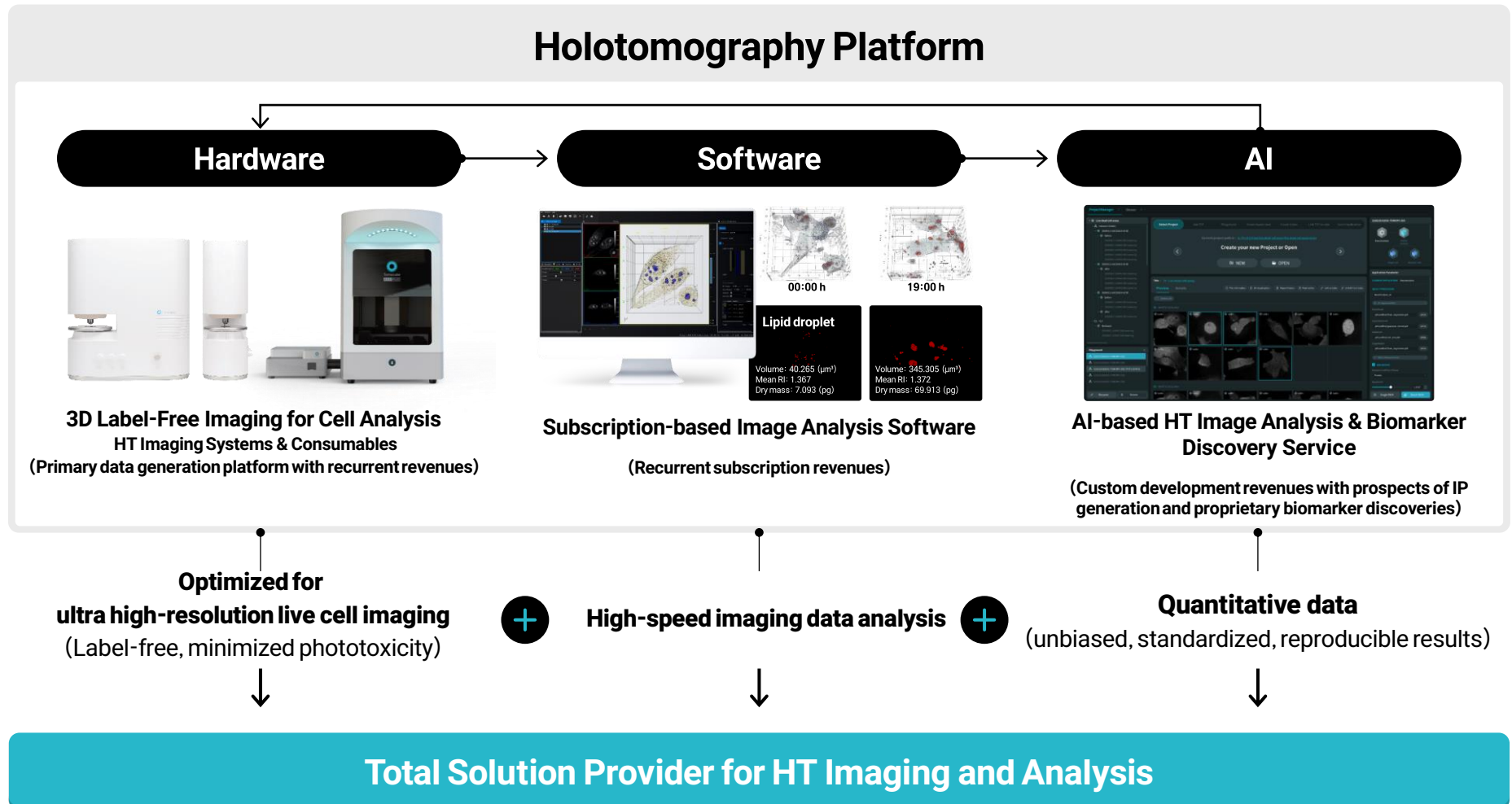
03. Distinct Competitive Advantages (1) Holotomography Comparison

(2) Cell Analysis Technology Comparison

04. Externally Validated Technology

# 01. Key Advantages of Holotomography

- Establishing a Competitive Business Model Through Proprietary Hardware, Software, and AI solutions

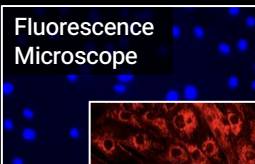


## 02. HT Platform (1) Hardware

- Establishing a Standard Protocol for 3D Label-Free Imaging

### Unmet Needs

#### Limitations of Labeling



Fluorescent Excitation Induces Phototoxicity, Causing Cellular Damage and Functional Alteration

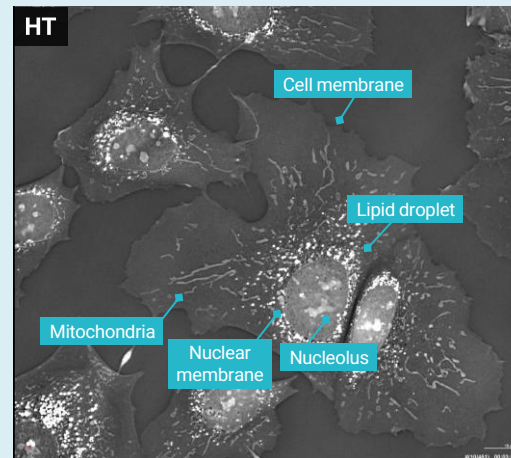
#### Limitations of 2D cell analysis



Challenging to Analyze Complex 3D Cellular Structures, Leading to Reduced Accuracy and Reliability

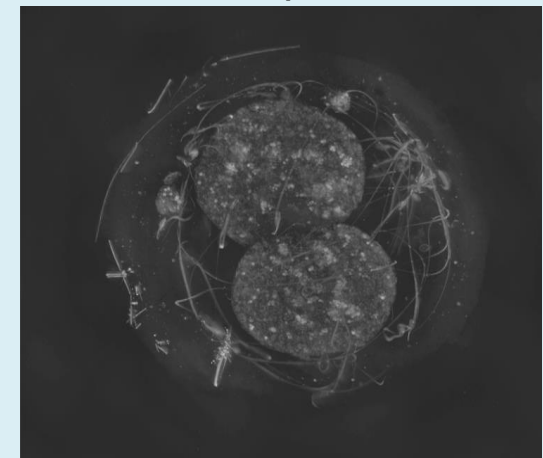
### Hardware Competencies

Enables Observation of Cells in Their Native State Without Compromising Viability or Function



Observes intracellular organelles Label-free, based on precise refractive index measurement

Accurate 3D Cellular Analysis of Thick Tissues, Organoids, and Complex Samples



No sectioning for thick tissues (<math>< 150 \mu\text{m}</math>)

Allows comprehensive structural analysis of entire cells

Maximizes cell survival with minimal structural impact

Enables extended cell imaging over time

## 02. HT Platform (2) Software

- From Custom Solutions to an Integrated Analysis Platform

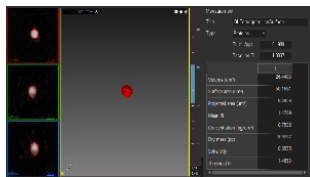
### Software Competencies



### Demand-Based Solution Development

2017

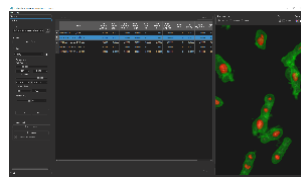
#### TomoStudio



Visualization of 3D HT data and single-cell analysis

2019

#### Lipid Analysis

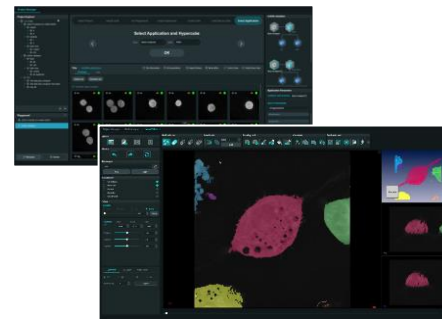


Targeted analysis optimized for specific conditions

### “ Expanded application areas through AI model-based software ”

2022

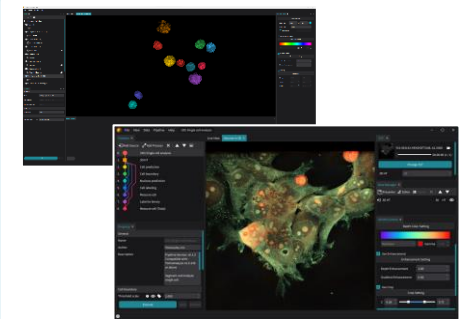
#### TomoAnalysis 1.0



- AI Model-Based Cell Organelle Analysis
- Rule-based multi cell analysis
- Applying uniform logics to big data

2024

#### TomoAnalysis 2.0



- Real-Time 3D Visualization
- Manageable Analysis Logic System
  - 120 Rule-based modules
  - 7 AI-based modules
- 33 Application-Specific Algorithms

AI-based software for cell and organelle analysis

## 02. HT Platform (3) AI

- World-Leading AI-Powered Analysis Platform for HT Imaging and Biomarker Discovery

01

### Quality Improvement via AI

Maximizing HT imaging definition & reconstruction speed

Up to 10x

Reconstruction speed improvement

Up to 2x

Definition

Solving laser speckle, Low SNR

02

### Automated Cell/Organelle Segmentation

Automated quantitative analysis of large 3D images captured by HT

Machine Learning  
+  
Deep Learning  
+  
Code-less

03

### Label-Free Cell Type & State Differentiation

Differentiates types and states of label-free cells using AI

Sepsis

19 bacteria types

99.9%

Accuracy rate powered by AI analysis<sup>2</sup>

04

### Virtual digital staining technology

Simulated staining extracted from HT images of non-stained cells

97%

Extraction accuracy for 3D digital dyes<sup>3</sup>

+ 6 channels

# of simultaneous 3D dye extraction

Exceeding Google AI and Allen Institute's capabilities

Reference 1 : J. Park et al., *Nature Methods* 20, 1645 (2023)

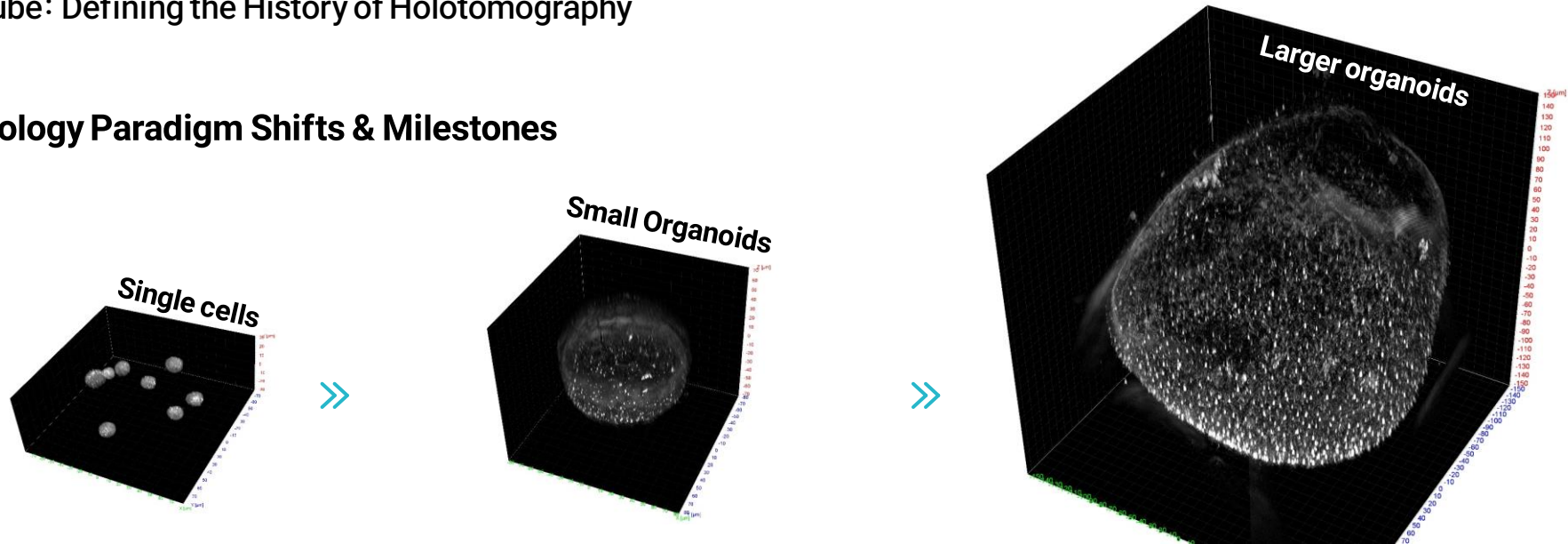
Reference 2 : G. Kim et al., *Light: Science & Applications* 11, 190 (2022)

Reference 3 : Y. Jo et al., *Nature Cell biology* 23, 1329 (2021)

# 03. Distinct Competitive Advantages: Holotomography Comparison

- Tomocube: Defining the History of Holotomography

## HT Technology Paradigm Shifts & Milestones

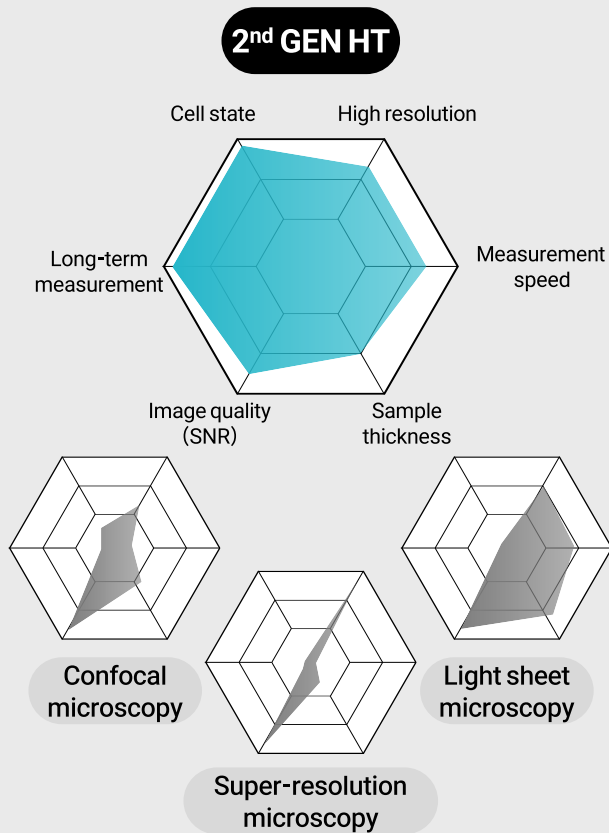


	1 <sup>st</sup> Generation	2 <sup>nd</sup> Generation	Future
Category	1 <sup>st</sup> Gen HT (Competitor)	2 <sup>nd</sup> Gen HT (Tomocube)	Future HT (Tomocube)
Model	3D Explorer	HT-X1 (2022 2H) / HT-X1 Plus (2024 2H) / HT-X1 mini (2025 2H)	HT-X1 Max (Planned 2026; currently under client testing)
Pros	High resolution	High resolution & SNR (Signal-to-noise ratio) System stability with quantitative measurement	More than 2x improvement in imaging depth from previous models Able to scan thicker organoids
Cons	Unstable, 3D measurement only for monolayered cell	Increased capital expenditure (excluding mini)	-
Maximum resolution	250 nm	150 nm	124 nm
Depth	30 μm	150 μm	Max 500 μm
Light source	Laser	LED (single wavelength)	LED (Multiple wavelengths)

# 03. Distinct Competitive Advantages: Cell Analysis Technology Comparison

- Setting the Benchmark in Cell Analysis: Tomocube vs. Competitors

## Necessary Specs

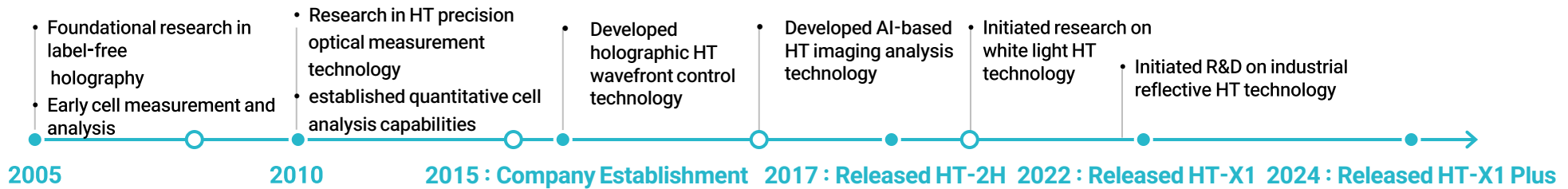


## Comparison with Other Optical Devices

Category	3D Imaging	Resolution	Multimodal Imaging	Thickness	Label-free	Quantitative	Artificial Intelligence
<b>Tomocube (Korea) HT (2<sup>nd</sup> Gen)</b>	●	●	●	●	●	●	●
<b>S**** (Germany) Bright-field microscopy</b>			○		△	△	
<b>S**** (Japan) Optical coherence tomography</b>	○			○	○		
<b>N**** (Japan) Confocal microscopy</b>	○	○	○	△			
<b>Z**** (Germany) Light sheet microscopy</b>	○	△	○	○			△
<b>M***** (USA) High speed confocal microscopy</b>	○	○	○	△		△	△
<b>N***** (Swiss) HT (1<sup>st</sup> Gen)</b>	○	○	△		○	△	△

# 04. Externally Validated Technology with robust IP protection


## •• 100 Granted and Pending Patents: Domestic & International Recognition





### Patents related to core tech

R&D History	18 years
Publications	63
R&D Costs	KRW 19.8 bn.
domestic patents pending	16
domestic patents granted	28
international patents pending	27
international patents granted	29
<b>Total patents</b>	<b>100</b>


### Awards and Recognitions



**IR52 Jang Young-shil Award**  
Nov. '17 / Min. of Science and ICT

**Microscopy Innovation Award**  
2019, 2025 / Microscopy Society of America



**Best Life Science Product Finalist**  
2023 / SelectScience

- Top 10 Mechanical Technologies(2016)
- PRISM Awards Finalist (2018)
- Awarded by the Min. of Science and ICT, South Korea (2021)
- Awarded by the Min. of SMEs and Startups, South Korea (2021)
- Awarded by "Korea Innovative Startup" (2022)

---

Chapter 2.

# Expanding the applications of HT

---

01. Tomocube's Target Market

02. Opportunity # 1 Organoids

Opportunity # 2 In Vitro Fertilization

Opportunity # 3 Cell Therapies

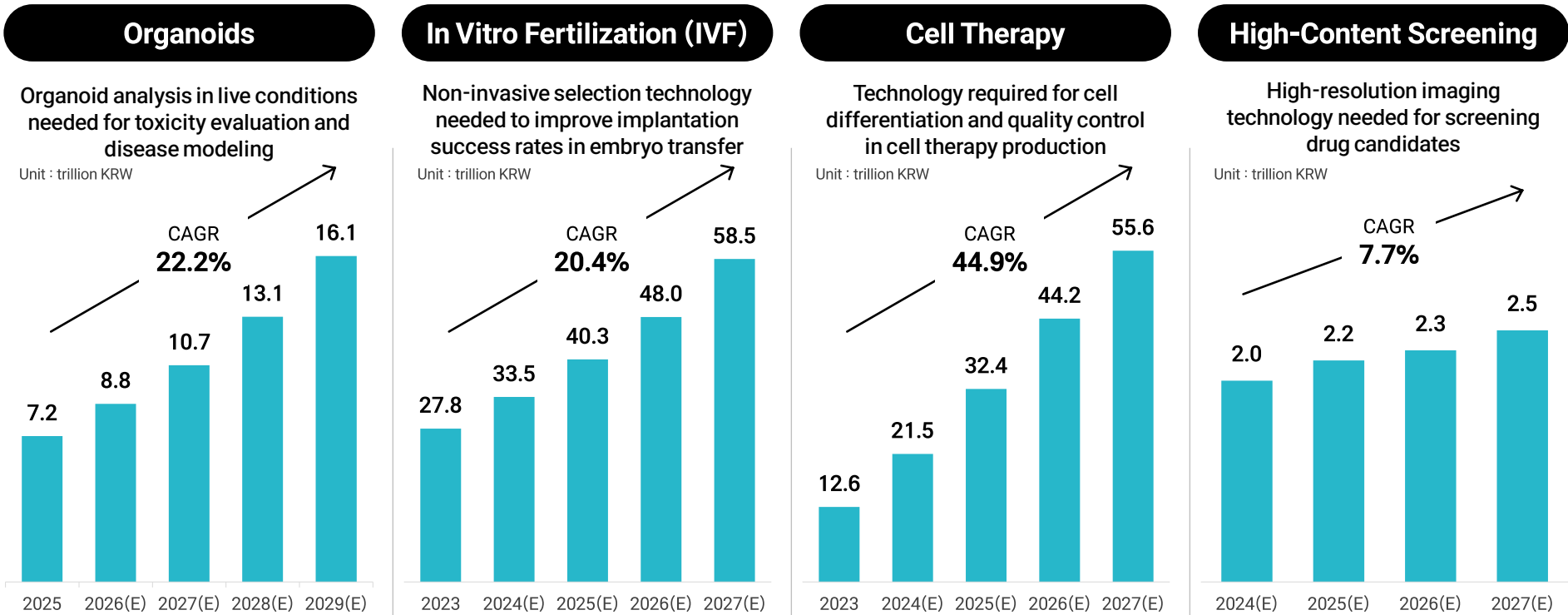
Opportunity # 4 Drug Development

Opportunity # 5 Non-Bio Industrial Applications

# 01. Tomocube's Target Market

- 3D Biology & Regenerative Medicine Market Growth

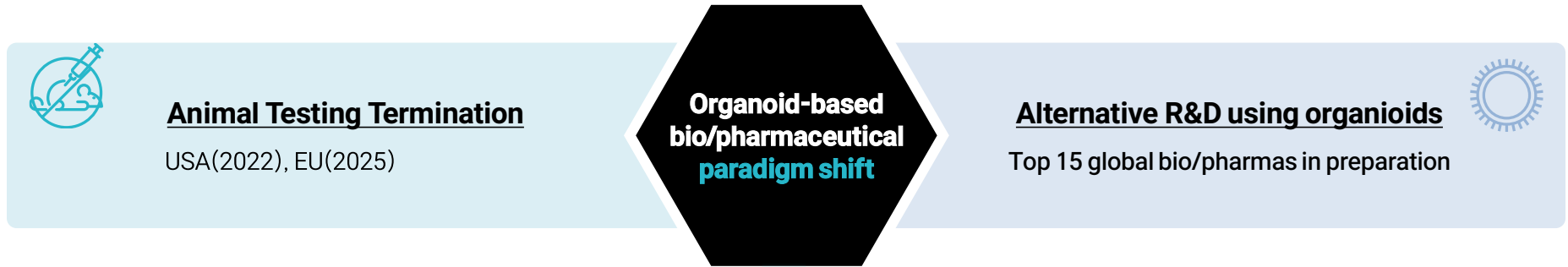
Market Size Projection  
**2027 Approx. 120 trillion KRW +  $\alpha$**

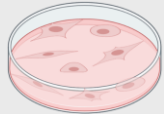
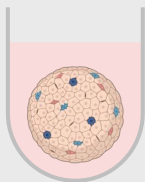


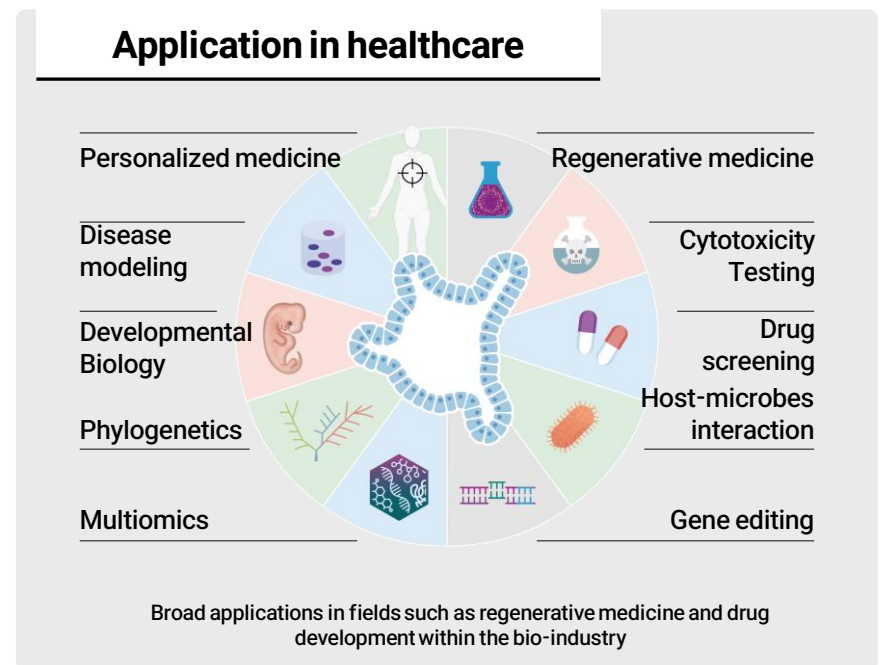
References: The Insight Partners, Frost&Sullivan, Fact.MR, Markets and Markets, Future Market Insights, Research and Markets, Stringent Datalytics

# 02. Expanding Applications of HT(1): Organoids\*

- Organoids as a new model in Advanced Bioindustry



Cell vs. Organoid	
	
<b>2D cell models</b>	<b>3D organoid cell models</b>
	Category
Sole	Cell type
X	Intra-cell activities
Dish, plate, etc.	Growth platform
Preliminary R&D, Drug test	R&D purpose
	<b>Multiple</b>
	<b>0</b>
	<b>3D Matrix</b>
	<b>Cancer, New Drug, Reg. Med.</b>
Limited cell-to-cell interaction and lack of biomimetic environment in 2D models	<b>Realistic simulation of the biomimetic environment and accurate cell-to-cell interaction in 3D models</b>



\* Organoid: tiny, self-organized three-dimensional tissue cultures that are derived from stem cells

## 02. Expanding Applications of HT(1): Organoids

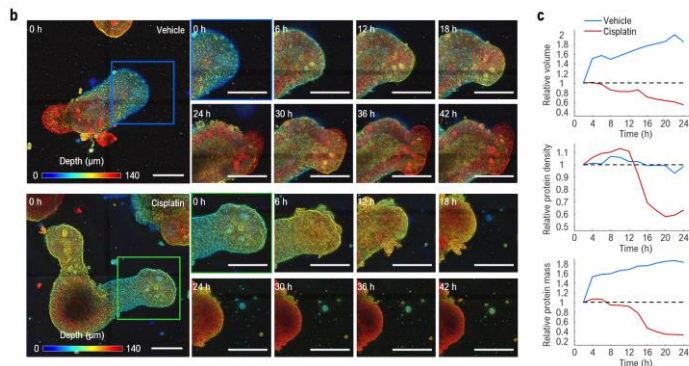
- Standardization of Organoid Analysis Using HT

### Collaboration with Global Top Pharmas

Phenotypic Analysis of Organoid Cells Using AI-powered Holotomography

→ Signed a Joint Development Agreement with a Global Top-tier Pharmaceutical Company ('25.01)

Establishing a Standard Protocol for Organoid Analysis Using 3D Label-free Imaging and AI



Reference: M. J. Lee et al., Experimental & Molecular Medicine (2024)

### Collaborating w/ US-KOR Gov't Agencies

Selected for bio material developments

→ 3D organoids imaging device for new drug safety verification

Leading organoids R&D and QA/QC standardization

Korea



Joint R&D

USA



Joint R&D with NIH and its counterparts in Korea

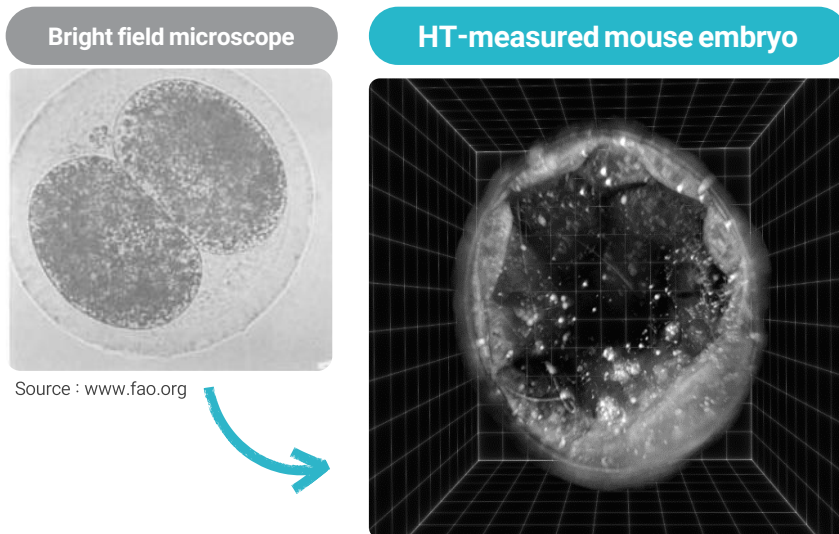
Leading Standardization Efforts with Global Enterprises and Government Agencies

## 02. Expanding Applications of HT(2): IVF

- 3D Label-Free HT Imaging and AI for Selecting High-Implantation Embryos

### Conventional Unmet Needs

- Label-free imaging is essential for embryo selection processes
- Prohibited to dye or edit genes during embryo selection process
- Current BF microscopy: high intra- and inter-clinician variability



**Unique Technology for Label-Free Selection  
→ 3D Label-free Holotomography**

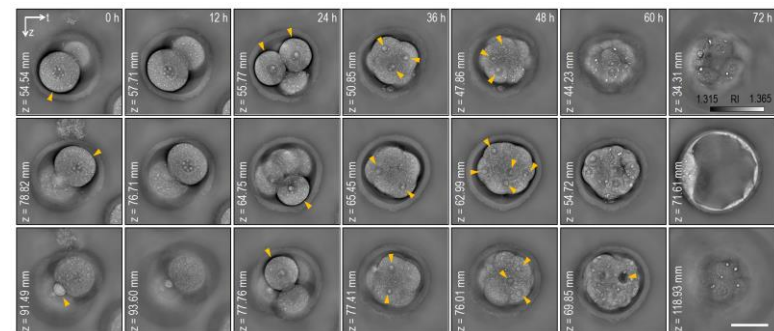
### Synergies from strategic partnerships

**Embryo selection using HT and Virtual Biomarkers**

**Big hospitals & institutions**



**Phototoxicity test for IRB approval using HT-X1 in human embryo studies**

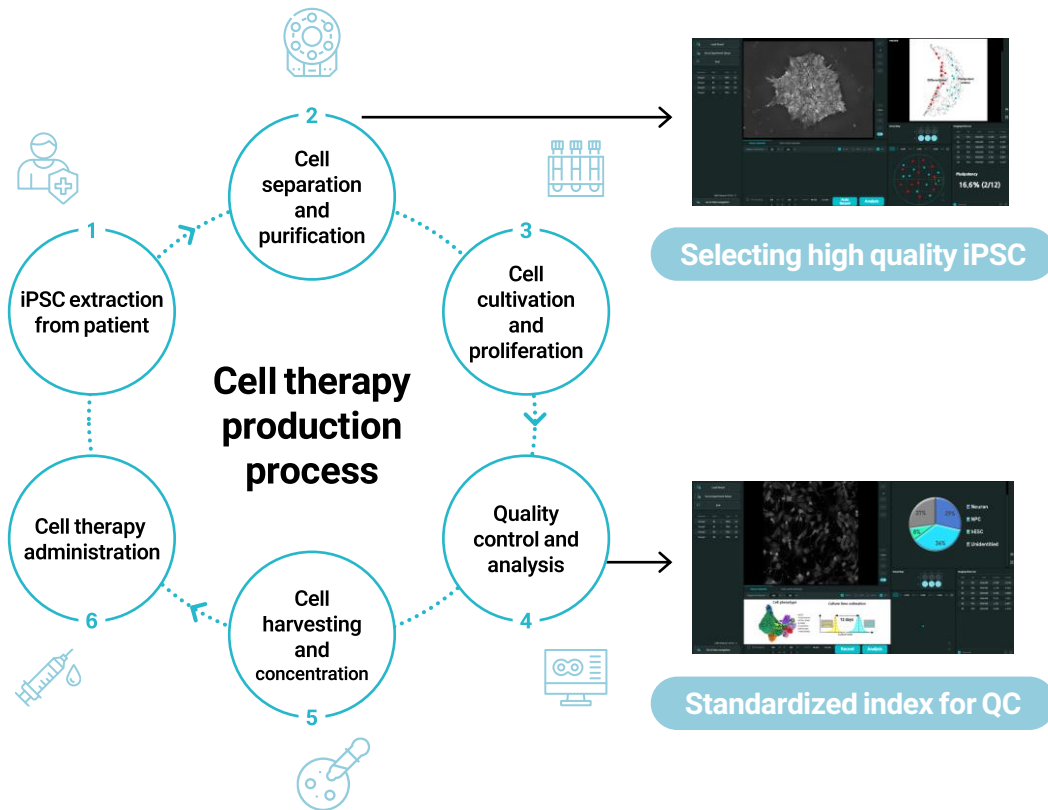


- 3D high-res. imaging from the one-cell stage to blastocyst (72 hours) confirmed
- AI-based embryo selection – 95% Accuracy (under review)

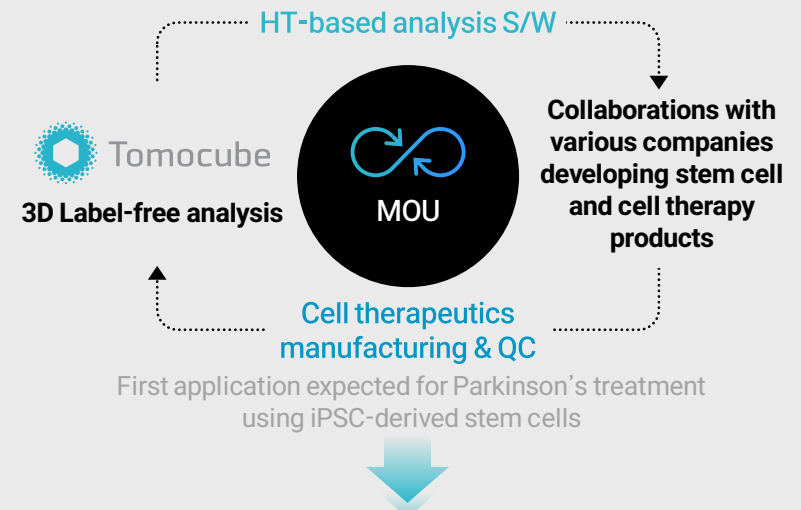
## 02. Expanding Applications of HT(3): Cell Therapy

- Transformative Solution for Quality Control in Cell Therapy Manufacturing

HT powered analysis S/W allowing Improvements in cell therapeutics manufacturing



### Non-invasive QC Process for Cell Therapy



Potential for application across diverse cell therapies



# 02. Expanding Applications of HT(4): Drug Development

## •• Application of HT in Phenotypic Drug Discovery (PDD)

### Improving Phenotypic Drug Discovery with HT and AI

**TDD Target-Based Drug Discovery**

**New discovery approaches necessary for incurable diseases**

**PDD Phenotypic Drug Discovery**

- Real-time cell/tissue reaction observations → Can confirm efficacies
- Suitable for multi-targeted complex diseases
- Able to develop First-in-class drugs despite uncertain molecule target

**New drug approval using PDD methods**

Roche's SMA(Spinal Muscular Atrophy) therapy Evrysdi(risdiplam)

### Entering new PDD markets using AI

**feature extraction software → Applicable to drug screenings**

**As-is**

**Cell culture** → **Cell Staining**

Image acquisition on High-content imaging system → Image Analysis and feature extraction

**Imaging & Data analysis**

**Tomocube**

**Cell culture** → **Imaging & Data analysis**

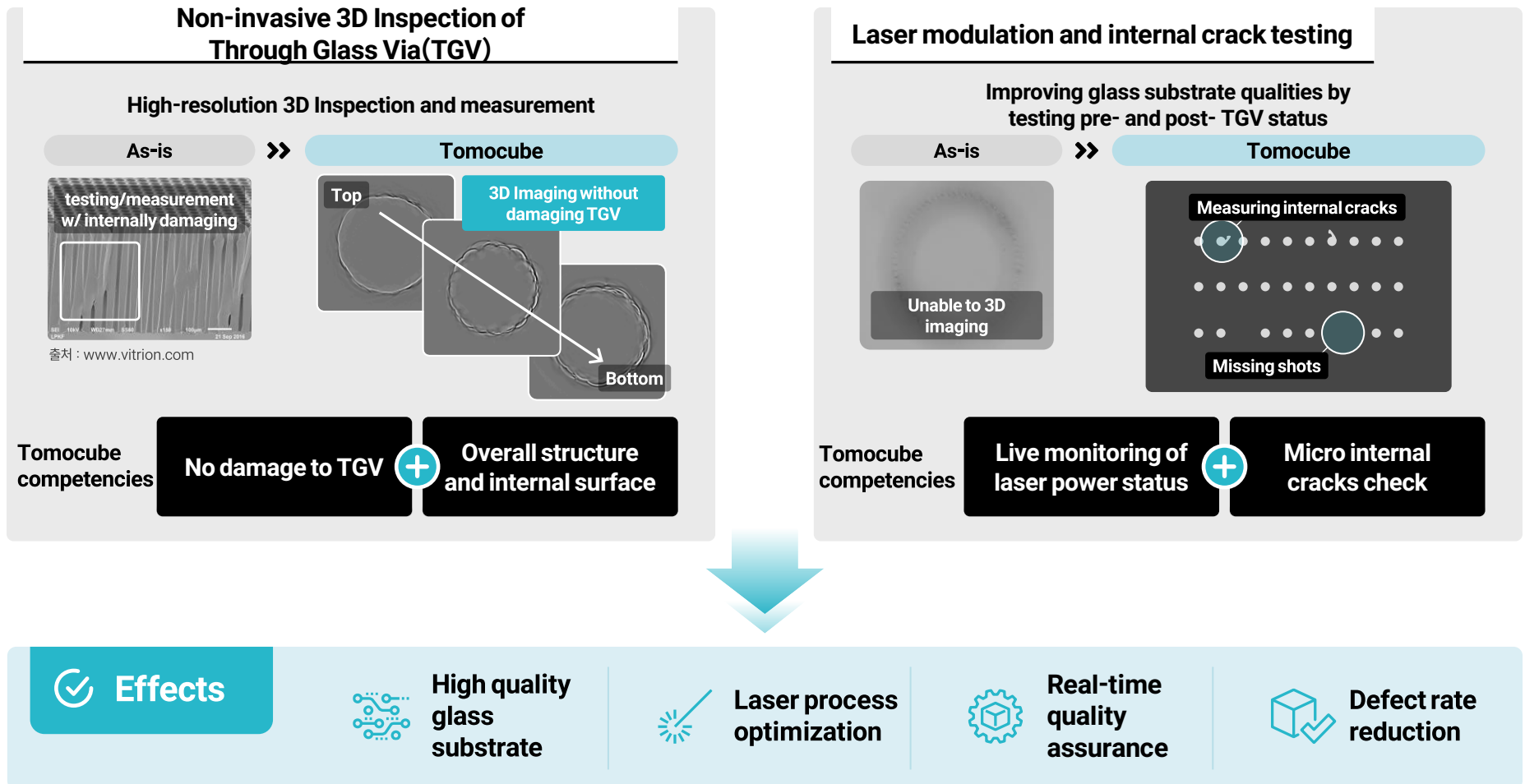
- Decreasing time & cost by skipping staining and washing
- Not damaging the cells using label-free methods
- Accurate data from S/W driven HT

**AI model-based feature extractor will be updated on TomoAnalysis' next generation products**

PDD(Phenotypic Drug Discovery): uses empirical, target-agnostic lead generation to identify pharmacologically active molecules and novel therapeutics which work through unprecedented drug mechanisms.  
 TDD(Target-Based Drug Discovery): focused on a drug target, a gene product that provides a starting point for invention of a therapeutic which modulates its expression, function, or activity

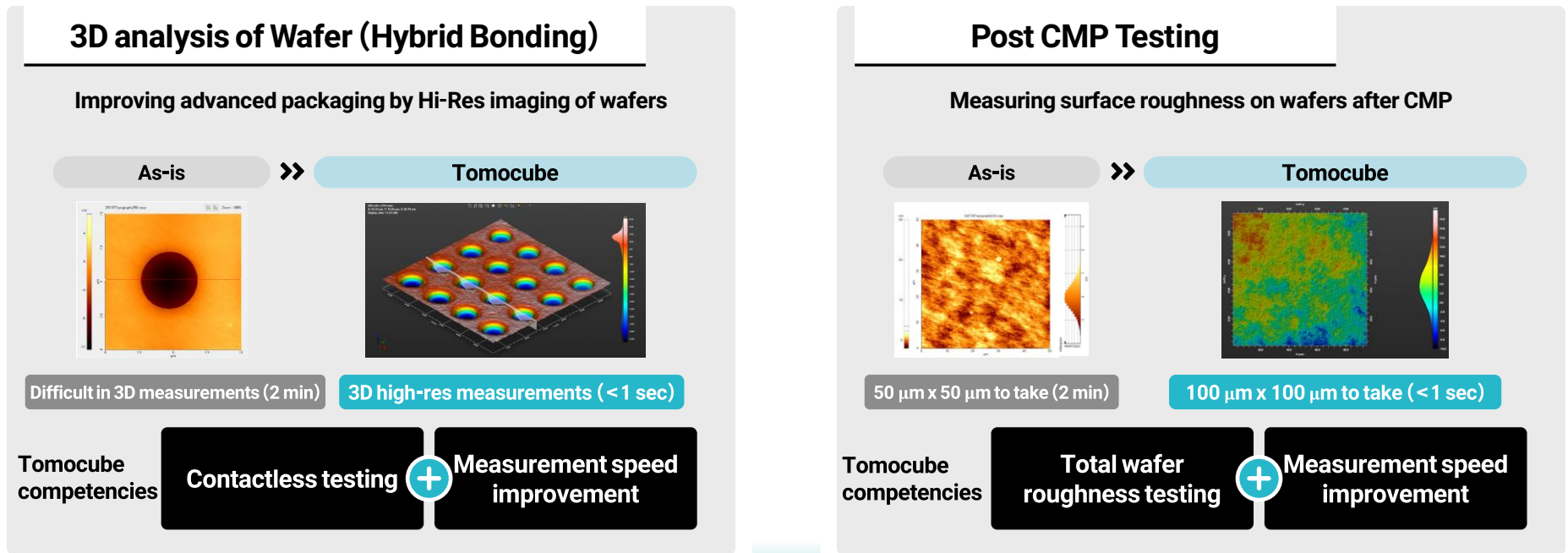
## 02. Expanding Applications of HT(5): Non-Bio Industrial Use

- Non-Destructive Testing: Key Challenges in Glass Substrate and TGV Manufacturing



## 02. Expanding Applications of HT(5): Non-Bio Industrial Use

- High-Throughput Metrology: Key Challenges in Hybrid Bonding and CMP Process Control



## 02. Expanding Applications of HT(5): Non-Bio Industrial Use

- Continuous R&D enabling the expansions beyond semiconductor and display sectors

### New product launching



HT-R1 (Alpha) demo model

July '24 HT-R1 (Alpha) rev.3 dev. complete



Q3 '24 Aberration correction algorithm appl.



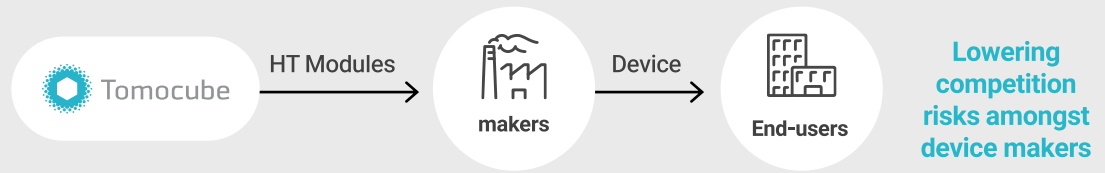
2025 Products for Hybrid Bonding testing



2026 HT-R1 launching

### 3D measurement modules & device

Early Providing modules to machinery/device makers



#### Key Industrial Applications

- OLED/microLED | 3D structural measurement and inspection of ultra-fine display components
- TGV | 3D structural analysis and crack detection of TGVs in glass substrates
- Wafer | Hybrid bonding inspection
- AR/VR | 3D structural analysis of Holographic Optical Elements

(HT-R1 module shipments to partner companies and clients started in 1H2025)

---

Chapter 3.

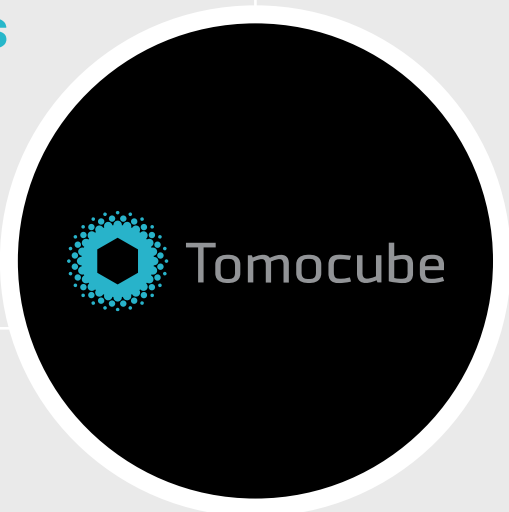
# Investment Highlights

---

- 01. Tomocube's Key Success Factors
- 02. Proven Technology Excellence
- 03. Proven Commercial Viability
- 04. Global Expansion Strategy
- 05. Leading Localization in Bio Equipment Manufacturing
- 06. 1Q26 Financial Highlights

# 01. Tomocube's Success Factors

- Advanced Deep Tech Innovator in Bio Industry



### First Player

World's First Commercialization of 2nd Gen Holotomography

### Sufficient Capitals

Investment from Major Global Companies and VCs

**KRW 44 bn. +**  
Capital raise

### Global Player

Proven Market Penetration with Global References

**73.1%**  
2025 Export Ratio

**30+ markets**  
Distribution Networks

### Rapid Growth

Revenue and profitability in high growth momentum

**+90% yoy**  
Revenue  
2024 – 2025

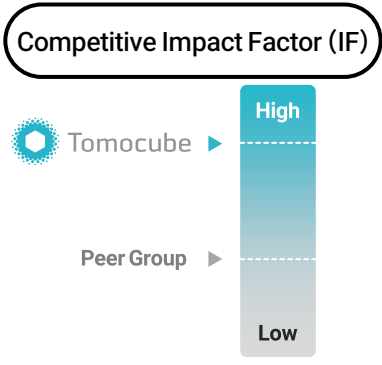
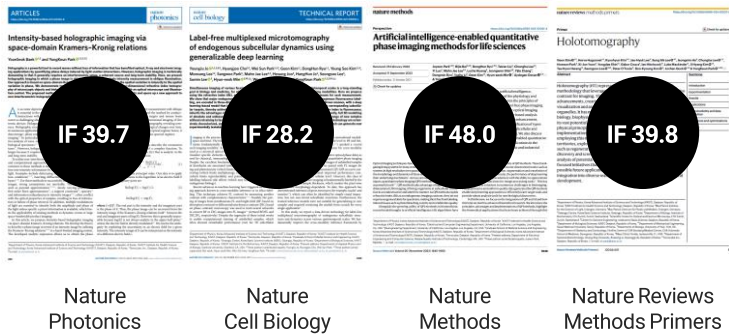
**82.2%**  
(2022~2025)  
Sales CAGR

# 02. Proven Technological Excellence

## •• Holotomography Recognition in Global Market

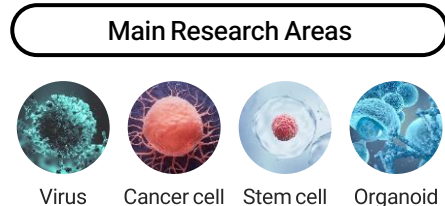
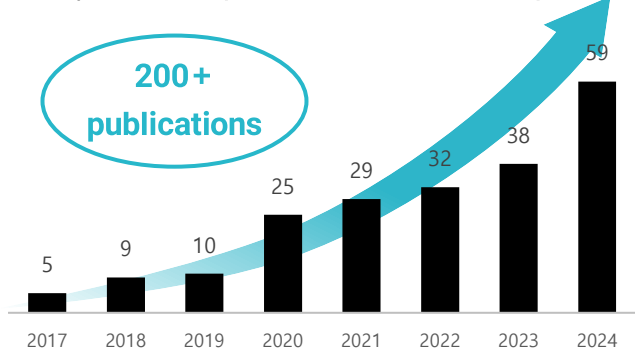
Tomocube is leading global technology developments

Holotomography featured in top publications by industry



## Cumulated customer references to HT's market position

Steady increase in publications w/ Tomocube products



Driving new customer acquisition opportunities

## Major International Collaborations and Conferences

Bioimaging, Organoids, Major Institutions (MIT, Harvard, Mayo Clinic, University of Tokyo, Tsinghua University)



Continuous exposure as the new bio/healthcare technology

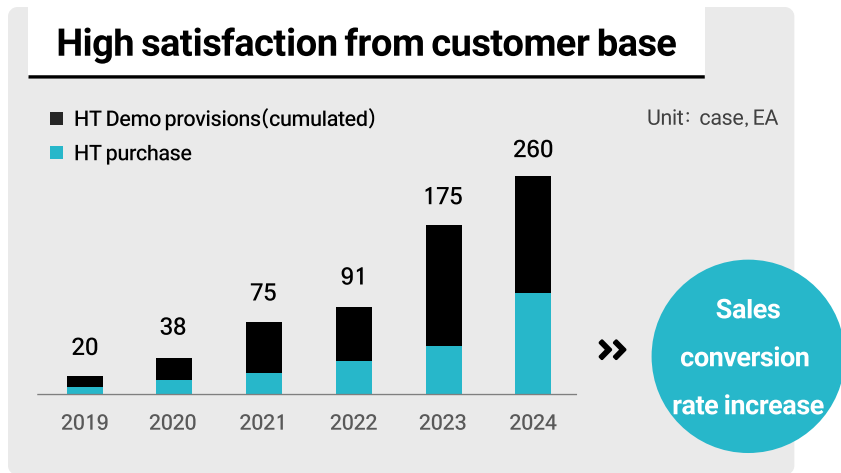


High Interest from Global Biopharma & Research Institutions

\* : Impact Factor - a measure of the frequency with which the average article in a journal has been cited in a particular year. It is used to measure the importance or rank of a journal by calculating the times its articles are cited.

# 03. Proven Commercial Viability

- HT Expected to Show Explosive Growth as Best-in-Class Technology



More global customer references

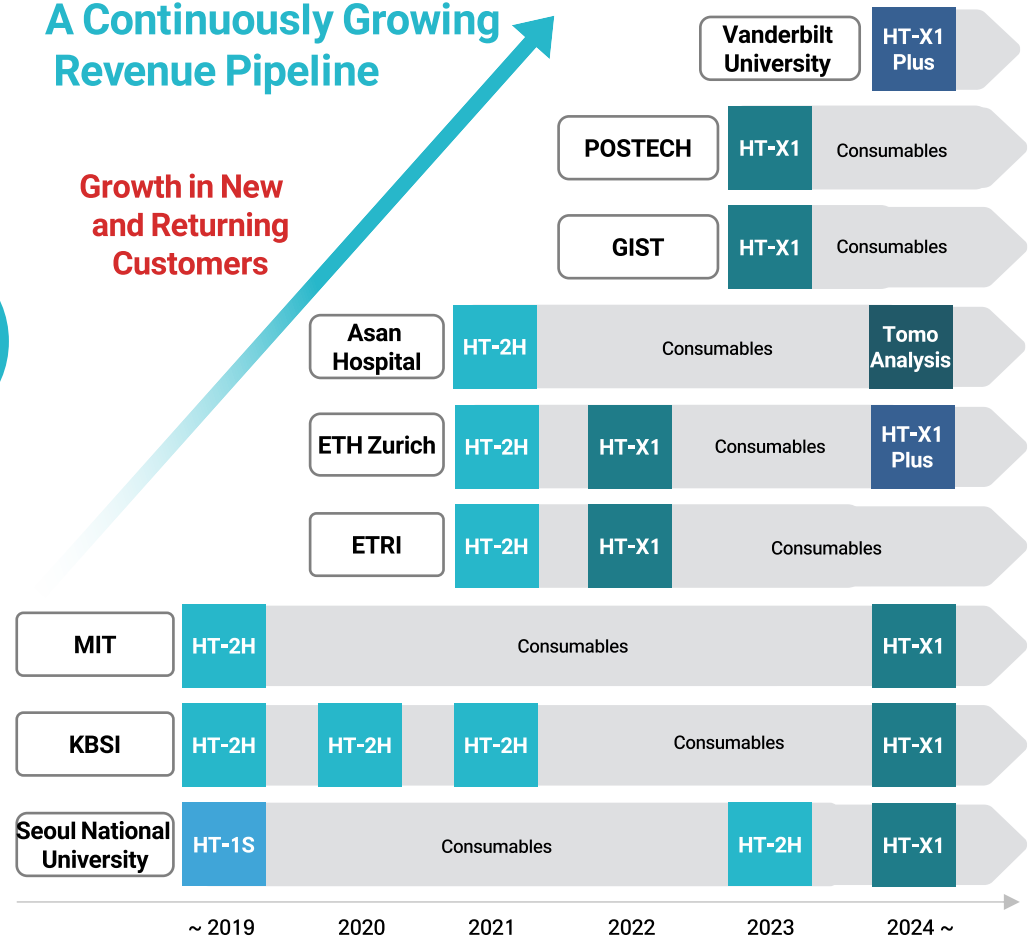
+ 100 Major Global Customers (Universities, Research Institutes, Corporations)

# of Customers CAGR 27.3% (2019~2023)

Universities and Institutes		Industry
Johns Hopkins University	ETH Zurich	CJ
Seoul National University	MIT	LG Chem
OIST	Asan Medical Center	BAYER
US Air Force Lab		

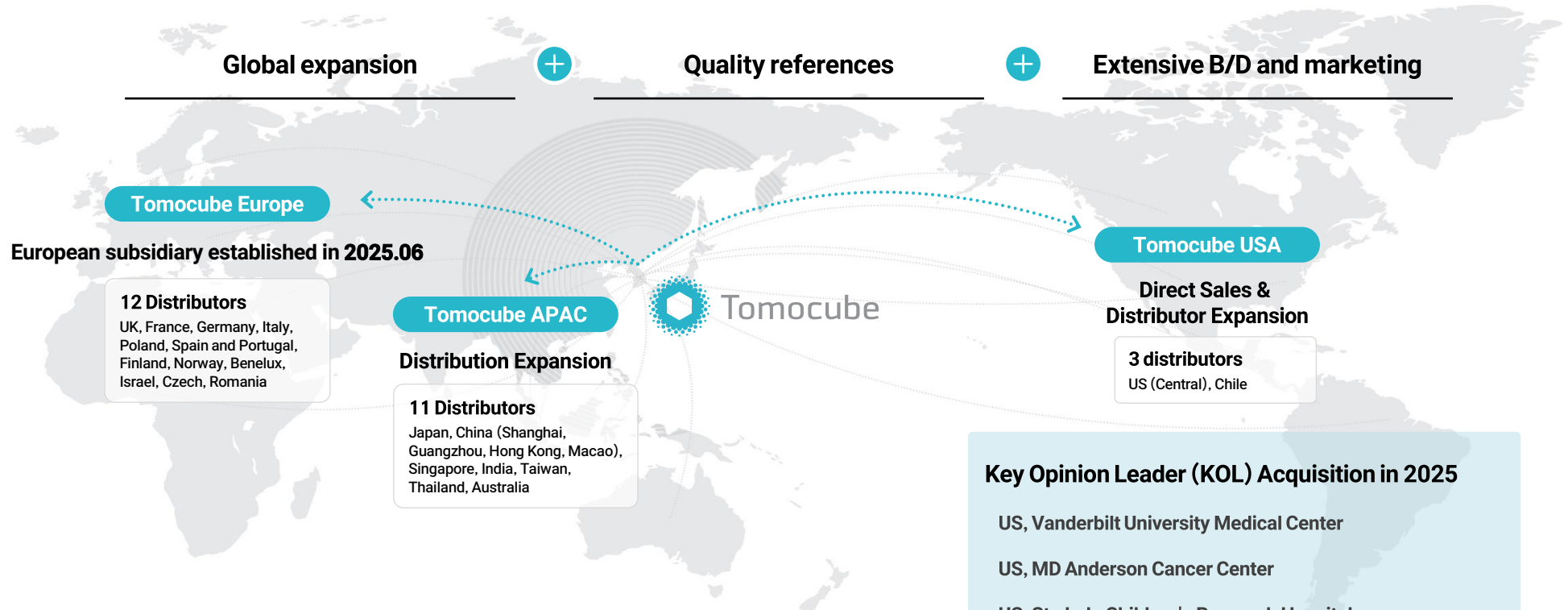
## A Continuously Growing Revenue Pipeline

Growth in New and Returning Customers



# 04. Global Expansion Strategy

- Expansion of Direct Sales & Distribution Networks Globally



**Tomocube Europe**

European subsidiary established in 2025.06

**12 Distributors**

UK, France, Germany, Italy, Poland, Spain and Portugal, Finland, Norway, Benelux, Israel, Czech, Romania

**Tomocube APAC**

**Distribution Expansion**

**11 Distributors**

Japan, China (Shanghai, Guangzhou, Hong Kong, Macao), Singapore, India, Taiwan, Thailand, Australia

**Tomocube USA**

**Direct Sales & Distributor Expansion**

**3 distributors**  
US (Central), Chile

**Key Opinion Leader (KOL) Acquisition in 2025**

- US, Vanderbilt University Medical Center
- US, MD Anderson Cancer Center
- US, St. Jude Children's Research Hospital
- US, Wake Forest Institute of Regenerative Medicine
- Switzerland, ETH Zurich (Returning Customers)

Acquisition of Global KOL Customers →  
Enhanced Technology and Product Promotion in  
Academia and Industry

**Global Marketing and Business Development**

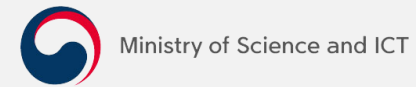
- Established Centers of Excellence
- Conference exhibition
- On-site demos
- Collaboration with distributors
- Social media / online PR



# 05. Leading Localization in Bio Equipment Manufacturing

- Direct Beneficiary of Government’s Bio Equipment Localization Policy

**KR Government’s subsidy on domestic device R&D** 5% or less for cell analysis equipment and other device dev.



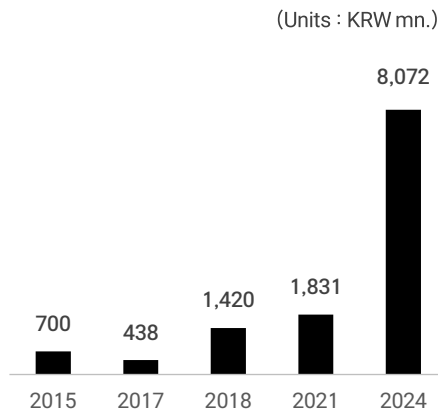
“20% or more to be domestically manufactured by 2027”

World-Class HT Technology

## Tomocube’s cumulative public funding history

Over KRW 12.5 bn. public R&D and subsidies since 2015

- 3D holography microscope
- Domestic device competencies improvement
- Biomedical technology
- ⋮



## Selected for PPS’s innovative device purchase

Public Procurement Service

“KRW 20.1 bn. worth purchase demand announcement”

Tomocube

HT-X1 5 units

Matching customers demands

- Seoul Natl. University
- Chonnam Natl. University
- Chungnam Natl. University
- Korea Basic Science Institute
- Korea Research Institute of Bioscience and Biotechnology

Completed Recognition of KRW 1.39 Billion Revenue for 2024

## 06. 1Q26 Financial Highlights

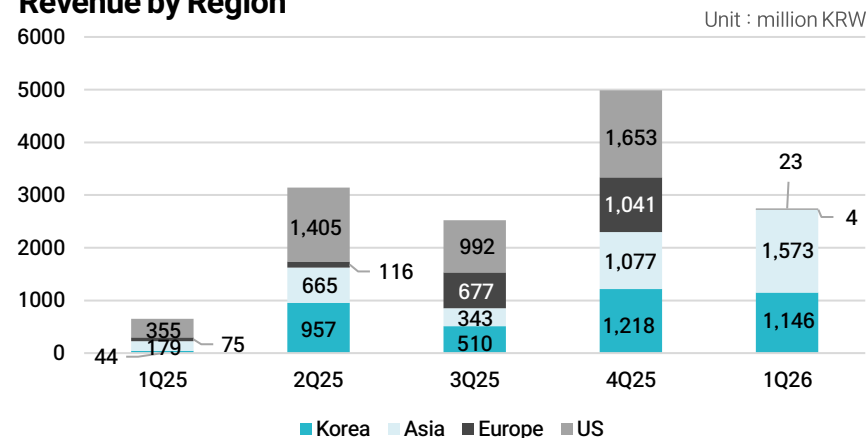
### • Summary Income Statement

- 1Q26 revenue was KRW 2.7bn, up 320.6% YoY but down 45.0% QoQ, reflecting quarterly revenue lumpiness and the timing of period-end orders, some of which were deferred to subsequent quarters.
- Gross margin was 61.5%, with QoQ margin compression driven by a lower contribution from non-bio revenue and a higher mix of HT-X1 mini sales.
- Operating loss was KRW 1.87bn, mainly due to lower revenue relative to fixed operating costs.
- New orders reached KRW 4.88bn, up 25.8% QoQ, indicating sustained order momentum despite quarterly revenue volatility.
- Export sales accounted for 58.2% of revenue, with strength in Asia partially offset by softness in the Americas and Europe.

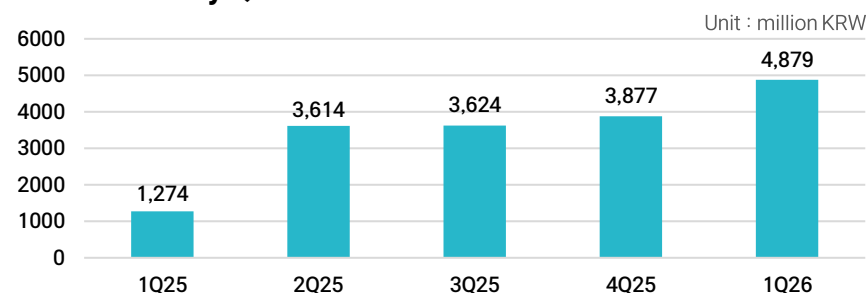
Unit : million KRW	1Q 26	1Q 25	YoY (%)	4Q 25	QoQ (%)
Sales	2,746	653	320.6	4,989	-45.0
Cost of Goods Sold	1,056	328	222.4	1,584	-33.3
Gross Profit	1,690	325	419.4	3,405	-50.4
GPM (%)	61.5	49.8		68.3	
SG&A	3,555	3,337	6.5	3,007	18.2
Operating Profit	-1,865	-3,012	-38.1	398	Turned to loss
Net Profit (Loss)	-1,355	-2,786	-51.4	643	Turned to loss

Notes: Based on reviewed K-IFRS financial statements

### Revenue by Region



### New Orders by Quarter



## 06. 1Q26 Financial Highlights

### •• Financial Statements

#### Statement of Financial Position

Unit : million KRW

Category	2023	2024	2025	1Q 26
Current Assets	15,952	40,062	35,721	35,127
Non-Current Assets	3,823	3,548	5,791	5,766
<b>Total Assets</b>	<b>19,775</b>	<b>43,610</b>	<b>41,512</b>	<b>40,894</b>
Current Liabilities	1,776	1,328	1,543	1,826
Non-Current Liabilities	291	292	1,175	1,106
<b>Total Liabilities</b>	<b>2,067</b>	<b>1,620</b>	<b>2,718</b>	<b>2,933</b>
Capital Stock	2,612	6,523	6,661	6,692
Capital Surplus	66,720	97,882	101,036	101,962
Other Capital Items	5,610	3,069	1,356	891
Accumulated Other Comprehensive Income	-16	36	72	102
Retained Earnings (Deficit)	(57,218)	(65,520)	(70,331)	(71,686)
<b>Total Equity</b>	<b>17,708</b>	<b>41,990</b>	<b>38,794</b>	<b>37,961</b>

Notes: Based on K-IFRS consolidated financial statements: FY2023–FY2025 figures are audited, while 1Q26 figures are unaudited.

#### Income Statement

Unit : million KRW

Category	2023	2024	2025	1Q 26
Sales	3,747	5,939	11,307	2,746
Cost of Goods Sold	1,565	2,349	3,864	1,056
Gross Profit	2,182	3,590	7,443	1,690
Selling & Admin Expenses	8,915	12,370	13,012	3,555
Operating Profit	(6,733)	(8,780)	(5,569)	(1,865)
Financial Gains (Losses)	(16,889)	300	718	136
Other Gains (Losses)	71	177	41	374
Profit (Loss) Before Tax	(23,550)	(8,302)	(4,810)	(1,355)
Income Tax Expense	-	-	-	-
<b>Net Profit (Loss)</b>	<b>(23,550)</b>	<b>(8,302)</b>	<b>(4,810)</b>	<b>(1,355)</b>

Notes: Based on audited K-IFRS financial statements.

---

# Appendix

---

01. Board of Directors

02. Key Personnel

# 01. Board of Directors

- Independent, professional board with a focus on accountability



## YongKeun Park **Chairman of the Board, CEO**

**Education** Ph.D. in Health Science and Technology, Harvard-MIT

- Career**
- Co-founder & CEO, Tomocube
  - Professor, KAIST



## Sang-II Park **Outside Director**

**Education** Ph.D., Stanford University

- Career**
- CEO, Park Systems
  - Former Founder & CEO, Park Scientific Instrument



## Byung-Kyun Ham **Outside Director**

**Education** J.D., Seton Hall University School of Law

- Career**
- Dentons Lee Senior Attorney
  - Former Law Firm Jipyeong Senior Foreign Lawyer
  - Former EVP & General Counsel, Seegene
  - Former attorney for the U.S. Department of Health and Human Services



## Sang-Hoon Cha **Outside Director**

**Education** Ph.D., Seoul National University, Medicine

- Career**
- Multipurpose Synchrotron Radiation Construction Project Committee
  - Central Pharmaceutical Affairs Council
  - Professor, Department of Medicine, Chungbuk National University College of Medicine
  - Former President, Osong Foundation for Advanced Medical Industry
  - Former President, Korea Drug Development Fund



## Sung-Ho Ko **Inside Director, COO**

**Education** M.S. in Industrial Engineering, KAIST

- Career**
- Former General Manager, Lutronic
  - Former Country Manager, Samsung Medison



## Young-seok Shin **Auditor**

**Education** M.S., Beijing University, MBA

- Career**
- CFO, ASTech Co., Ltd.
  - Former Director, Samjong KPMG LLC

## 02. Senior Executives

- More than 10 years of experienced management and development personnel in the relevant field



### YongKeun Park **CEO**

**Education** Ph.D. in Health Science and Technology, Harvard-MIT

- Career**
- Co-founder & CEO, Tomocube
  - Professor, KAIST



### Sung-Ho Ko **COO**

**Education** M.S. in Industrial Engineering, KAIST

- Career**
- Former General Manager, Lutronic
  - Former Country Manager, Samsung Medison
  - Former Quality Control, Daewoo Electronics



### Taehong Kim **SVP of Precision Division**

**Education** B.S. in Electrical and Electronic Engineering, KAIST

- Career**
- Former Software Team Lead, Wiseplanet
  - Former Software Engineer, Photon Dynamics Korea
  - Former Acron, S/W team



### Sumin Lee **SVP of Life Science Division**

**Education** Ph.D. in Life Sciences, POSTECH

- Career**
- Former R&D Project Planning, National Forensic Service
  - Former Postdoctoral Researcher, POSTECH



### Wan-Sung Ku **CFO&CSO**

**Education** Ph.D. (ABD) in Pharmacy, Sungkyunkwan University

- Career**
- Former CFO, Geninus
  - Former Analyst, NH Investment & Securities
  - Former Research Planning, Dong-A Socio Holdings

